

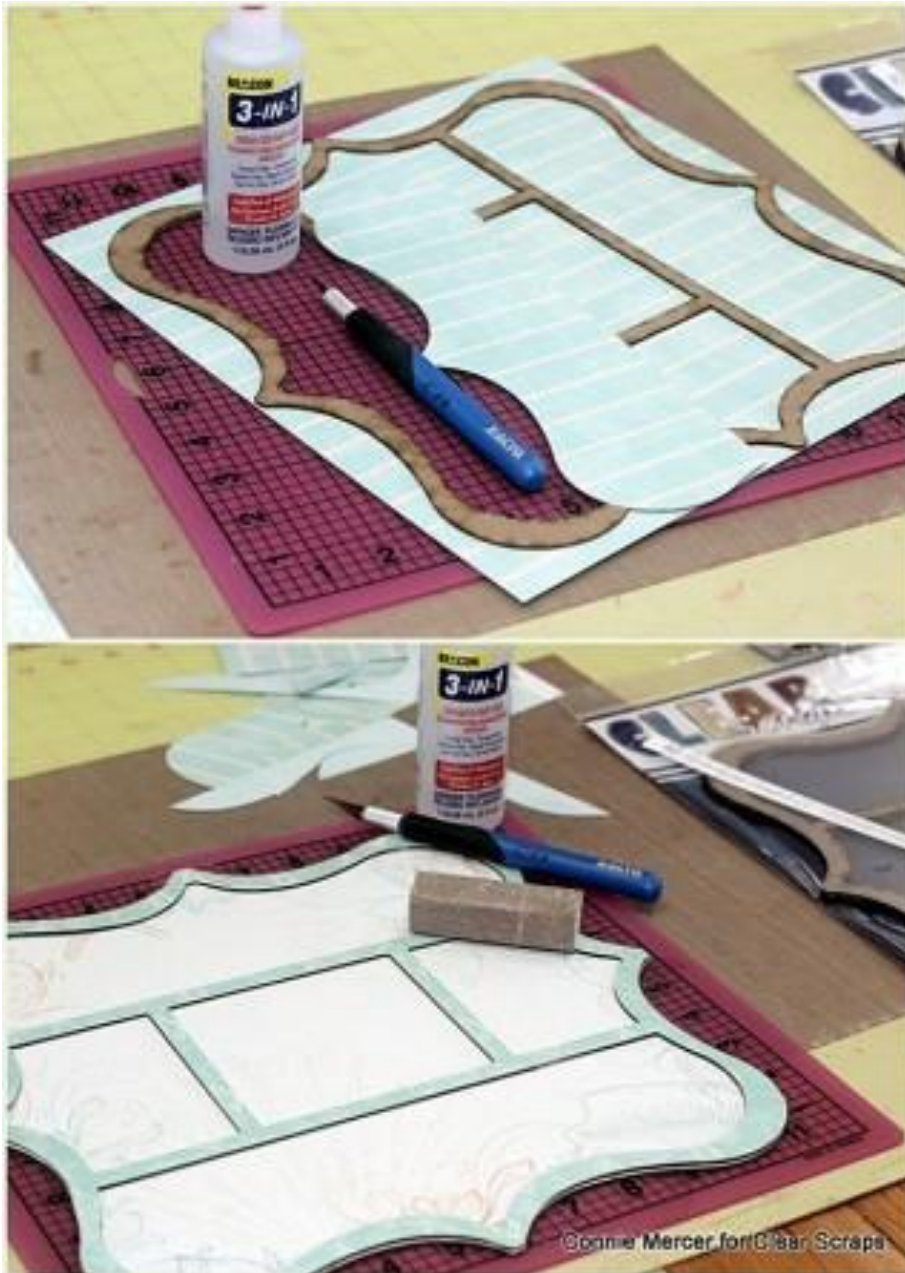
Hi, Connie here with the **Deco Printer Tray Frame, by Clear Scraps**, used to showcase a collection of scallop sea shells. I assembled this one a little different because I wanted the sea shells to stand out. Let me show you~



The shells are adhered to the acrylic cover on the outside. The seed beads are on the inside of the tray and require very little space.



The banner and the **chipboard star fish** is attached to the outside of the printer tray. The only piece, inside the tray, is the die cut, in the top section, and the seed beads. Here is a tutorial on how the **Deco Printer Tray Frame** is created.



Adhere pattern paper face down on the backside of the design; you want to show on the front, of the printer tray. Trim out the middle sections of the printer's tray using a x-acto knife. Cover the back of the printer tray with pattern paper. You are ready to assemble the layers of the printer tray frame.



Add color to the chipboard star fish with ink or paint. Shade the frame with ink.



Glue one frame section to the back of the printer tray. Add seed beads. Glue the acrylic cover over the seed bead section. Glue the next two sections on, the last section being the one covered with pattern paper. Add the chipboard star fish and sticker banner. Let dry. To display the Deco Printer Tray Frame, a plate hanger works really well.

Supplies used:

Clear Scraps: [Deco Printer Tray Frame](#)

Clear Scraps: [Sandollar chipboard embellishment](#)

Beacon

Quick Quotes PowderPuff Chalk ink

Quick Quotes Anchors Aweigh paper collection

sea shells, seed beads, twine

Thanks for stopping by~

Connie Mercer/DT Member